

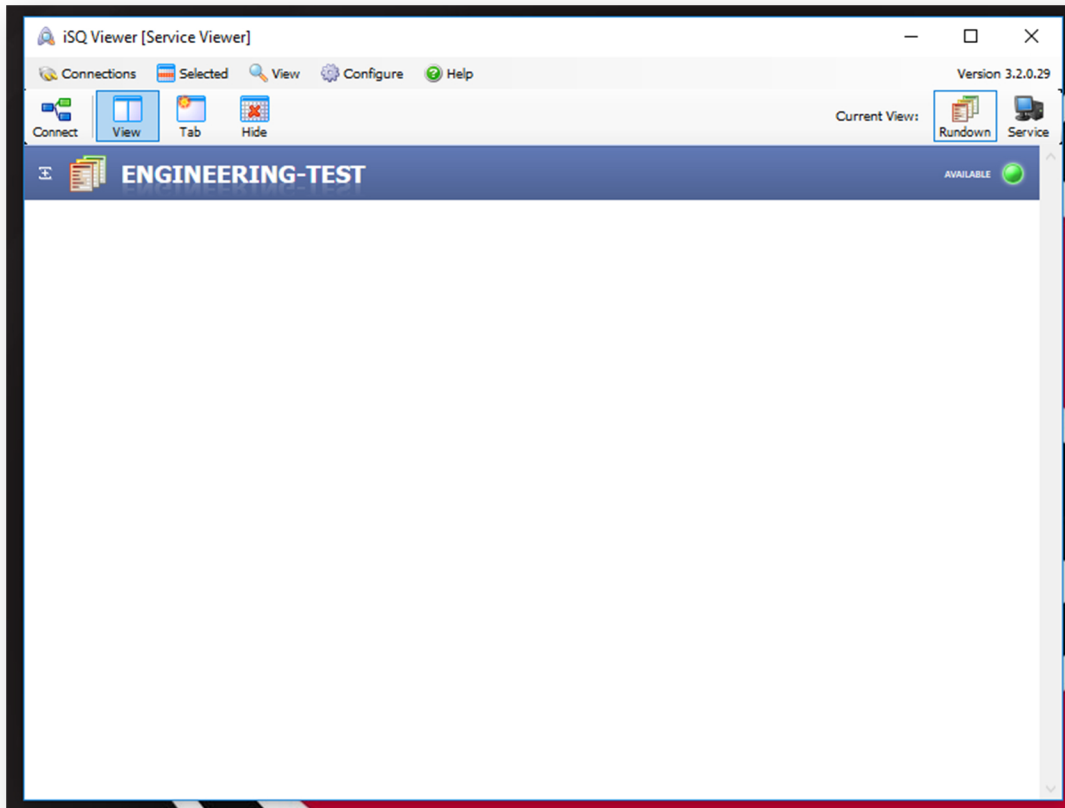
STARTING CHYRON iSQ VIEWER



STEP 1 On the ISQ computer, double click the iSQ Viewer icon on the desktop.



STEP 2 In the iSQ Viewer window, select the desired rundown and press “View.”



If no rundown is listed, ensure the iSQ Service is running on the Chyron and MOS Control Active and MOS Ready To Air are selected for the rundown in ENPS.

STEP 3

The iSQ Viewer window will open and the graphics will be available for playback.

Use the buttons on the control panel to cue and load graphics for news.

