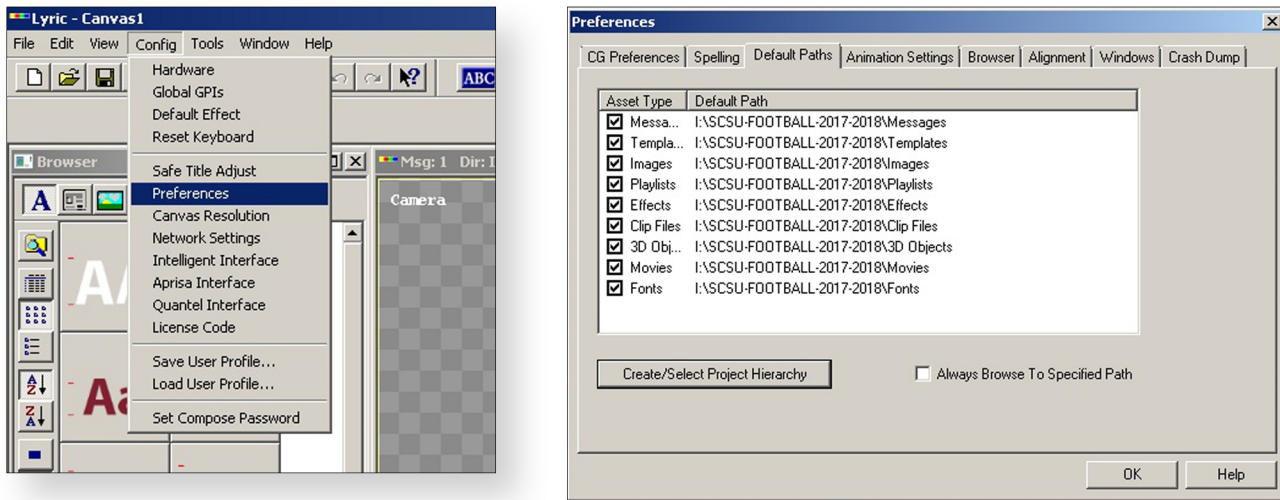


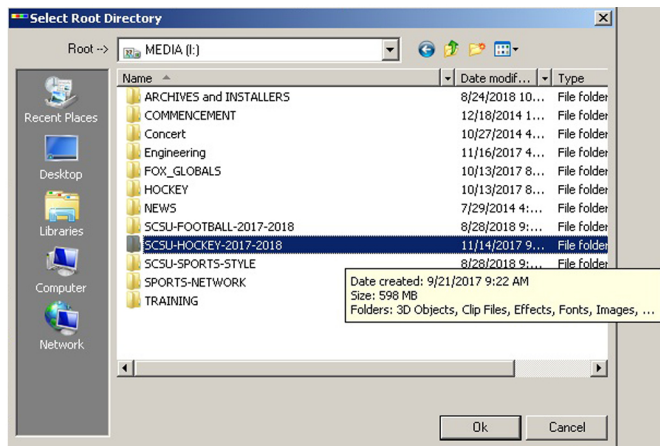
SETTING CHYRON LYRIC PROJECT DIRECTORY



STEP 1 Go to the “Config” menu and choose “Preferences.” Click the “Default Paths” tab in the Preferences window. Click “Create/Select Project Hierarchy.”



STEP 2 In the “Select Root Directory” window, choose the desired folder and press “Ok.”



STEP 3 The new directory will be visible in the Default Path. Click “Ok” to finish.

