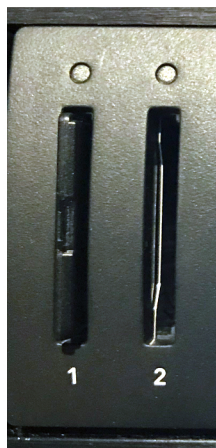


RECORDING VIDEO ON THE HYPERDECK

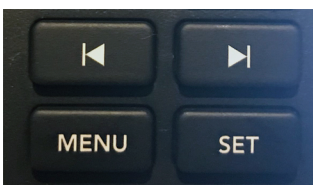


STEP 1

Insert the SD card into the first card slot on the Blackmagic Design Hyper Deck recorder.



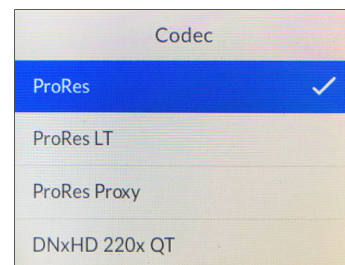
STEP 2 Use the navigational controls and the jog wheel to set the Record Codec to ProRes.



NAVIGATIONAL CONTROLS

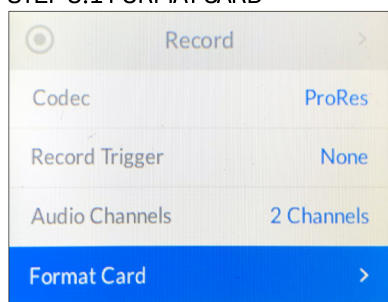


JOG WHEEL

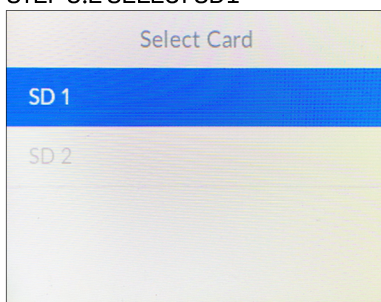


STEP 3 Use the navigational controls and the jog wheel to Format the SD card as exFAT.

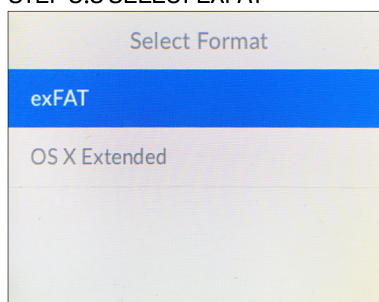
STEP 3.1 FORMAT CARD



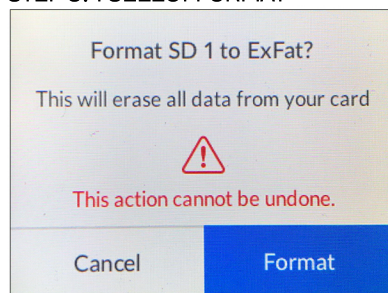
STEP 3.2 SELECT SD1



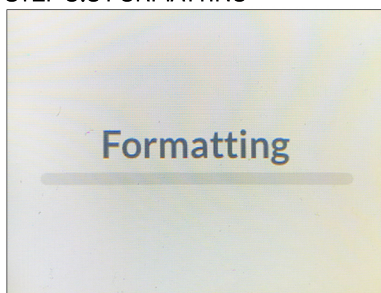
STEP 3.3 SELECT EXFAT



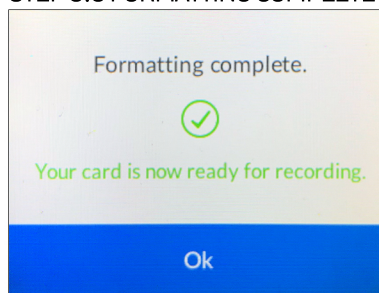
STEP 3.4 SELECT FORMAT



STEP 3.5 FORMATTING



STEP 3.6 FORMATTING COMPLETE



STEP 4 Press the Record button to start recording and the Stop button to Stop Recording.

RECORD BUTTON



STOP BUTTON

